

Total Carloads North America

	This Week		YTD		
	Cars	vs. 2020	Cumulative	Avg/wk	vs. 2020
Total Carloads	324,161	15.4%	7,236,461	328,930	7.0%
Chemicals	45,796	14.8%	1,006,901	45,768	3.8%
Coal	73,319	31.3%	1,513,520	68,796	8.4%
Farm Products excl. Grain, and Food	24,243	-3.7%	567,157	25,780	2.3%
Forest Products	16,715	14.5%	365,619	16,619	6.0%
Grain	32,284	-1.6%	821,979	37,363	19.0%
Metallic Ores and Metals	42,158	37.2%	921,315	41,878	10.5%
Motor Vehicles and Parts	18,827	19.0%	479,253	21,784	33.4%
Nonmetallic Minerals	39,479	1.0%	851,461	38,703	-2.4%
Petroleum and Petroleum Products	19,553	23.6%	447,556	20,343	-4.7%
Other	11,787	5.8%	261,700	11,895	-2.2%
Total Intermodal Units	350,015	9.4%	8,165,539	371,161	16.9%
Total Traffic	674,176	12.2%	15,402,000	700,091	12.0%

Total Carloads US

	This Week		YTD		
	Cars	vs. 2020	Cumulative	Avg/wk	vs. 2020
Total Carloads	227,497	18.1%	5,054,790	229,763	7.8%
Chemicals	32,602	16.9%	712,296	32,377	4.3%
Coal	65,101	33.5%	1,354,309	61,560	8.3%
Farm Products excl. Grain, and Food	15,395	4.1%	350,426	15,928	5.1%
Forest Products	9,776	13.4%	220,154	10,007	7.0%
Grain	21,352	1.9%	556,166	25,280	22.0%
Metallic Ores and Metals	23,332	73.9%	485,554	22,071	19.4%
Motor Vehicles and Parts	11,133	18.9%	294,895	13,404	29.9%
Nonmetallic Minerals	29,220	-3.0%	626,043	28,457	-5.7%
Petroleum and Petroleum Products	10,085	4.0%	239,783	10,899	-5.6%
Other	9,501	5.9%	215,164	9,780	2.1%
Total Intermodal Units	261,647	8.7%	6,206,969	282,135	18.7%
Total Traffic	489,144	12.9%	11,261,759	511,898	13.5%

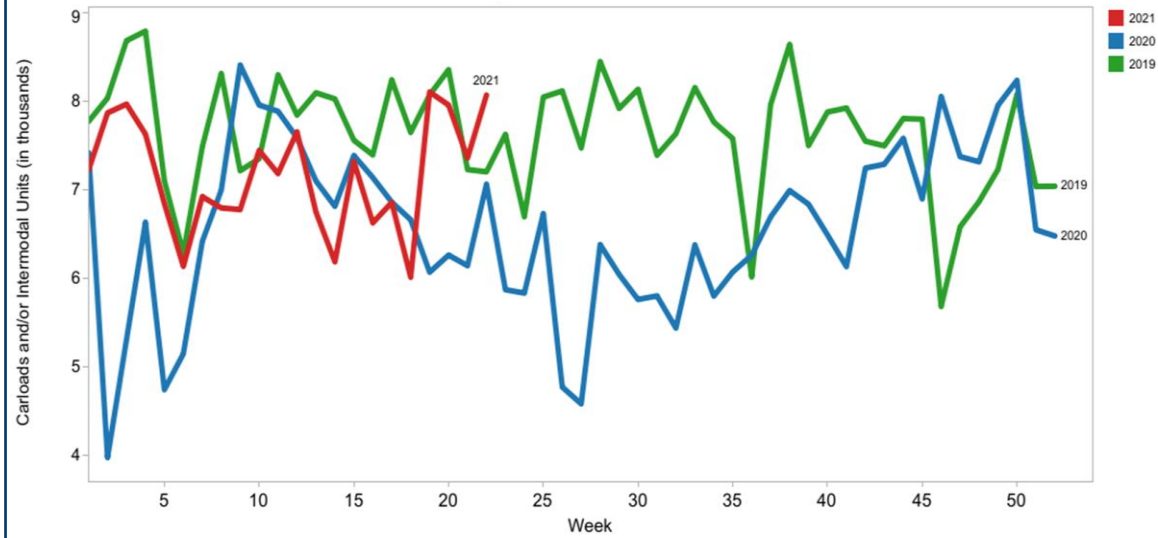
Source: AAR, STB, Company Websites

*Due to the reporting of 53 weeks in 2020, comparisons are made vs. the 2020 week number ahead of the current week. Time frames are the same

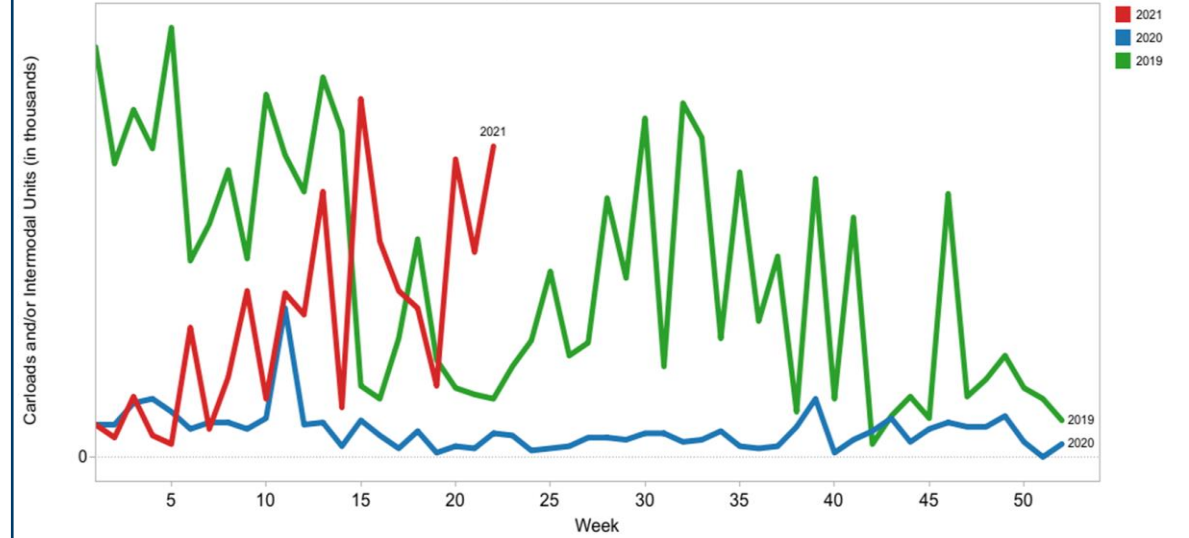
Total Carloads Canada					
	This Week		YTD		
	Cars	vs. 2020	Cumulative	Avg/wk	vs. 2020
Total Carloads	78,167	13.6%	1,733,615	78,801	4.8%
Chemicals	12,569	13.0%	275,434	12,520	3.4%
Coal	8,074	14.2%	157,785	7,172	8.0%
Farm Products excl. Grain, and Food	6,807	-17.3%	168,313	7,651	-4.0%
Forest Products	6,920	16.0%	145,092	6,595	4.5%
Grain	8,942	-1.9%	223,657	10,166	22.5%
Metallic Ores and Metals	14,710	16.1%	327,195	14,873	0.8%
Motor Vehicles and Parts	4,048	17.7%	98,362	4,471	40.1%
Nonmetallic Minerals	6,439	49.9%	123,963	5,635	8.6%
Petroleum and Petroleum Products	8,045	52.6%	180,554	8,207	-7.7%
Other	1,613	-1.0%	33,260	1,512	-16.6%
Total Intermodal Units	74,525	16.8%	1,604,058	72,912	13.9%
Total Traffic	152,692	15.1%	3,337,673	151,712	9.0%

Total Carloads Mexico					
	This Week		YTD		
	Cars	vs. 2020	Cumulative	Avg/wk	vs. 2020
Total Carloads	18,497	-5.1%	448,056	20,366	7.6%
Chemicals	625	-27.6%	19,171	871	-9.1%
Coal	144	1209.1%	1,426	65	298.9%
Farm Products excl. Grain, and Food	2,041	-4.8%	48,418	2,201	5.7%
Forest Products	19	58.3%	373	17	-33.6%
Grain	1,990	-27.1%	42,156	1,916	-20.1%
Metallic Ores and Metals	4,116	-11.5%	108,566	4,935	560.0%
Motor Vehicles and Parts	3,646	21.0%	85,996	3,909	38.6%
Nonmetallic Minerals	3,820	-18.6%	101,455	4,612	7.5%
Petroleum and Petroleum Products	1,423	68.0%	27,219	1,237	37.4%
Other	673	25.6%	13,276	603	-22.4%
Total Intermodal Units	13,843	-11.0%	354,512	16,114	1.4%
Total Traffic	32,340	-7.7%	802,568	36,480	4.7%

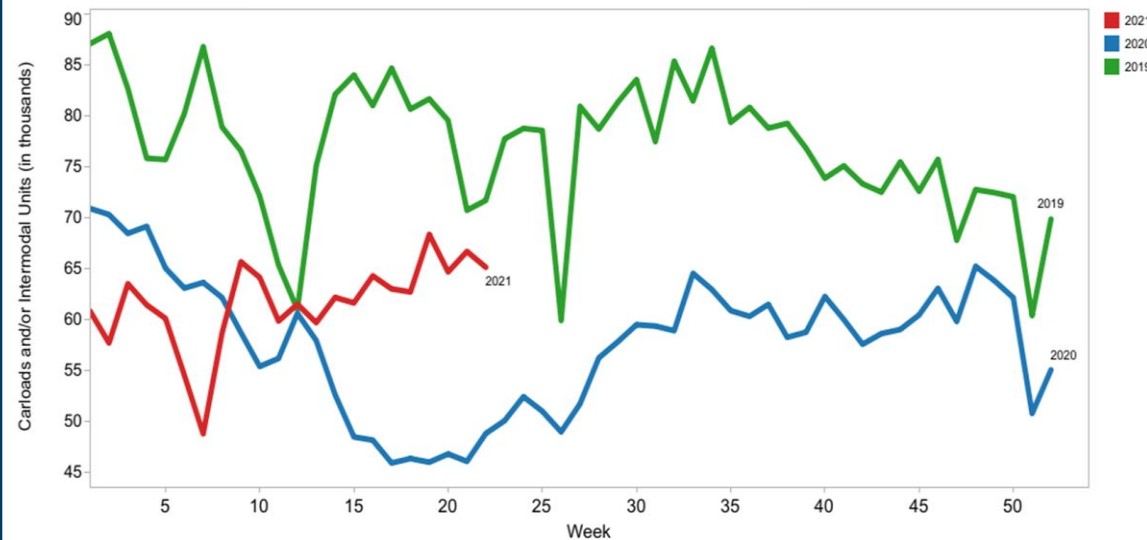
Total Coal Carloads Canada



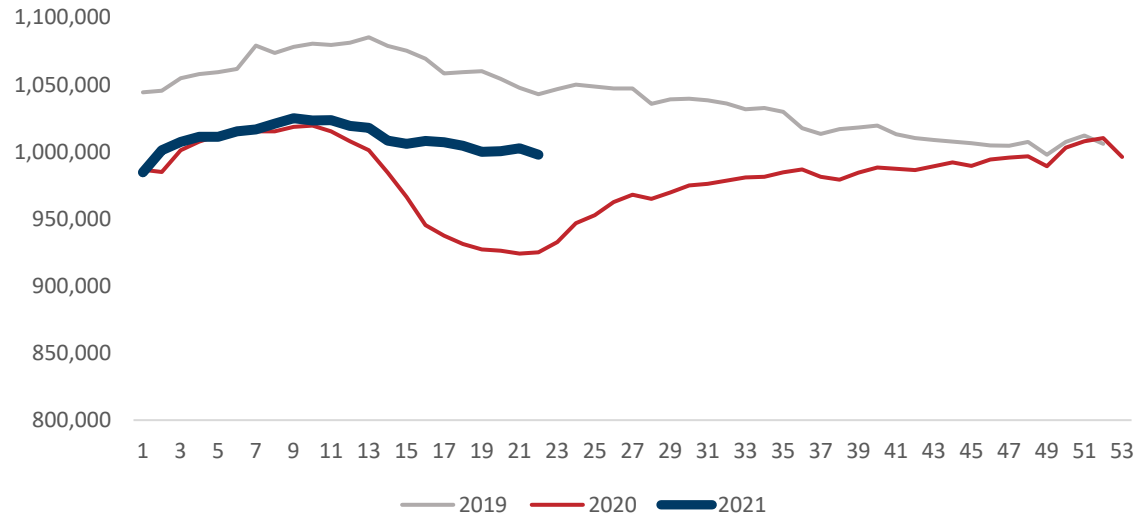
Total Coal Carloads Mexico



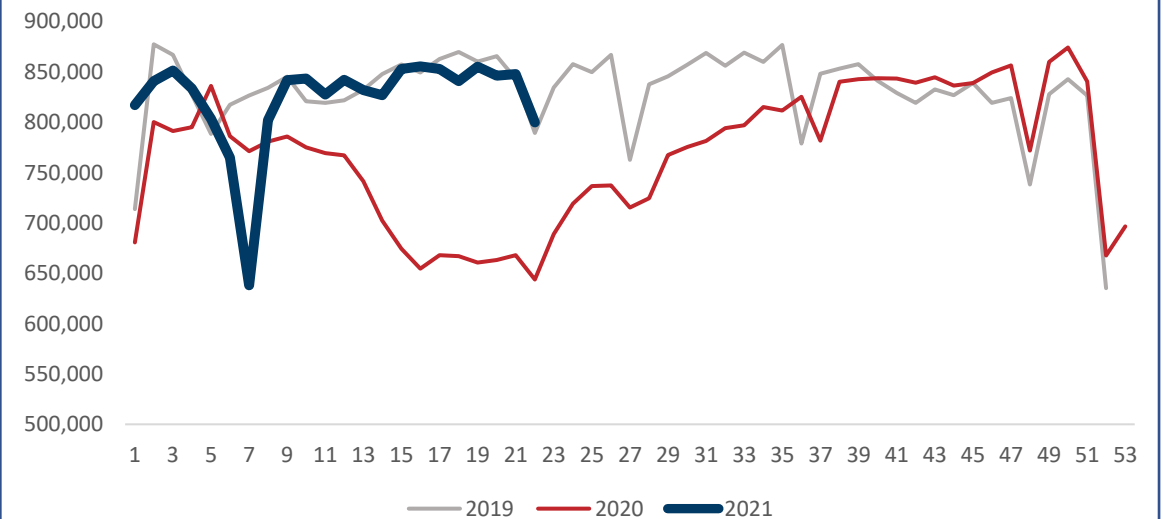
Total Coal Carloads US



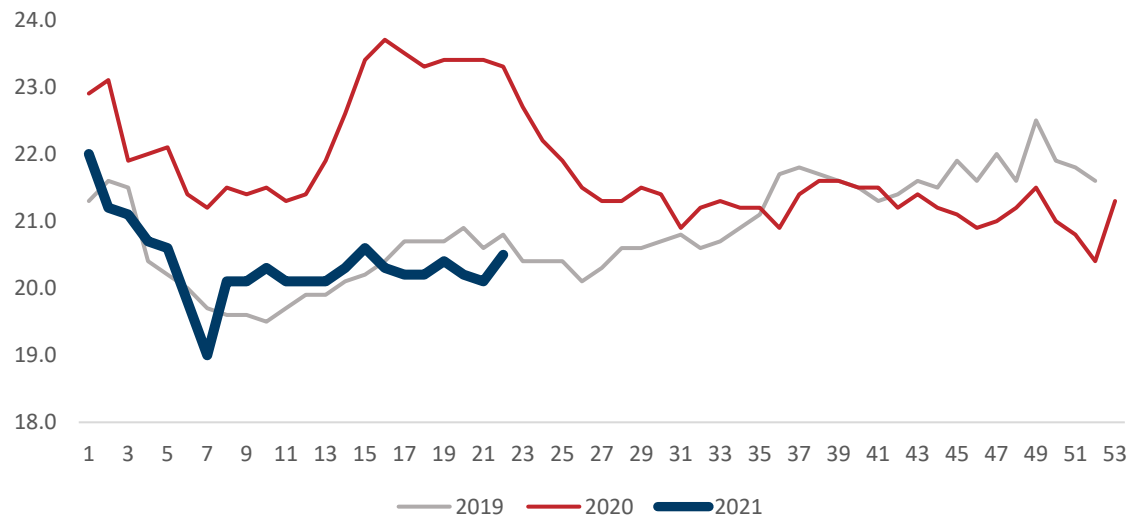
Total Cars Online in North America



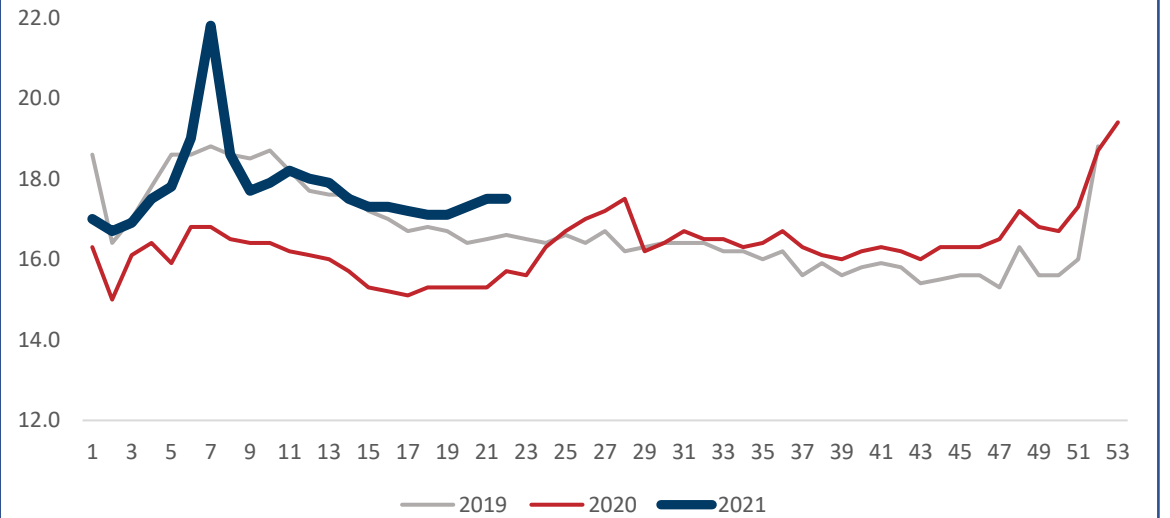
Total Traffic in North America



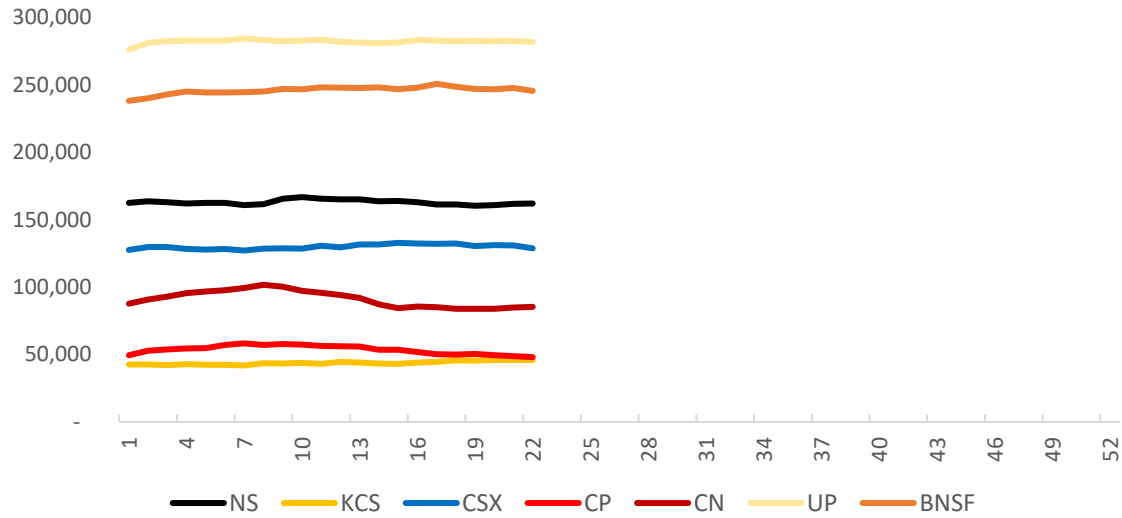
Average Train Speed (mph)



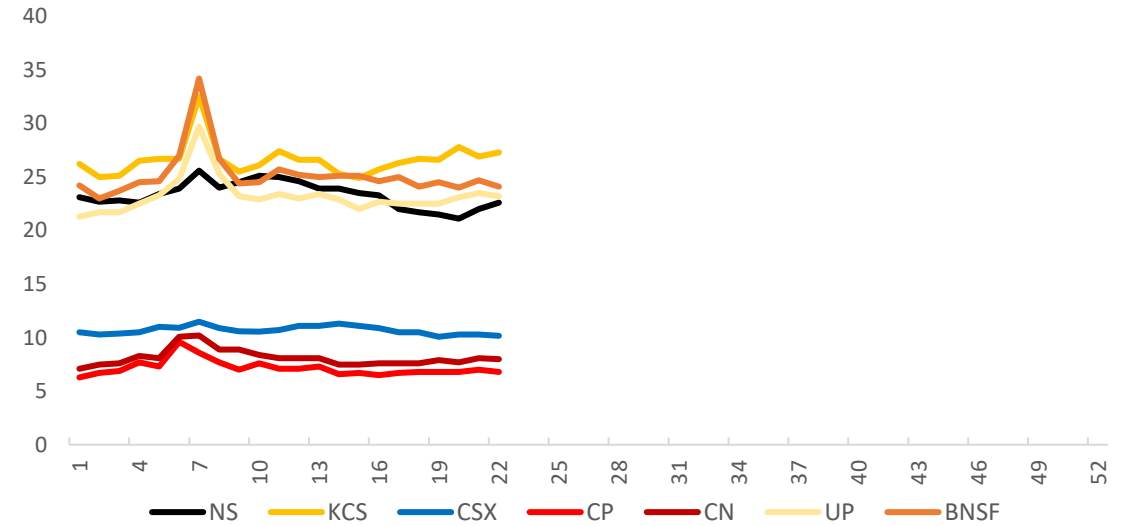
Terminal Dwell (hours)



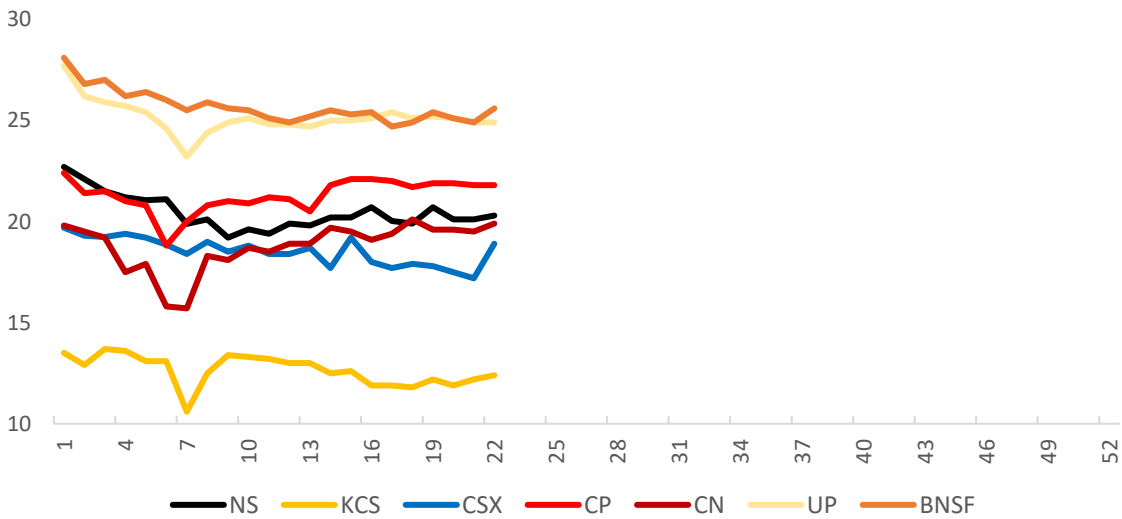
Weekly Cars Online by Class I Railroads



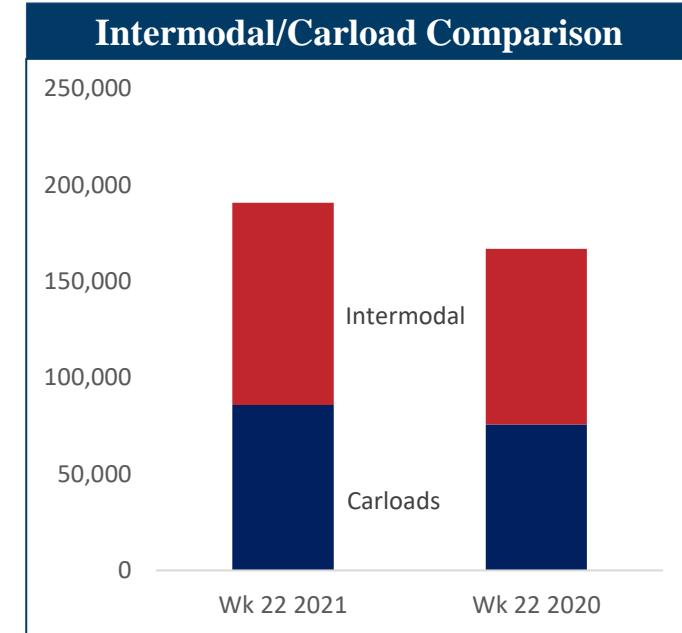
Average Terminal Dwell by Class I Railroads (hours)



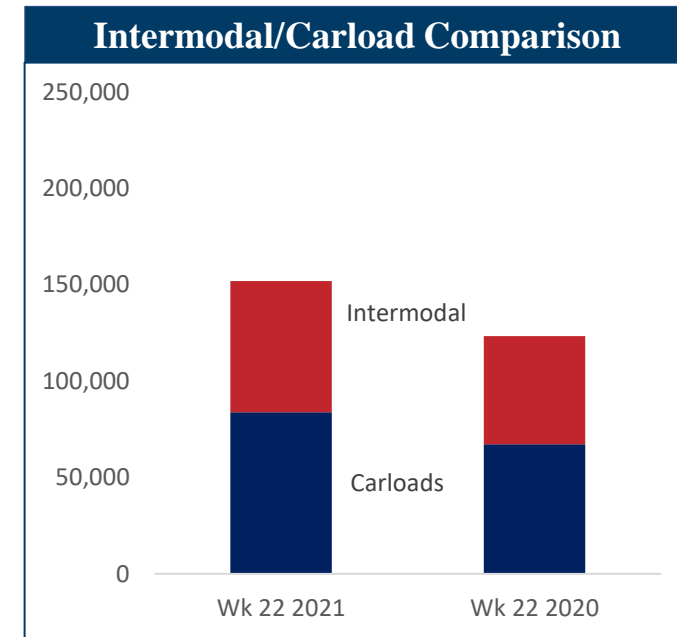
Average Train Speed by Class I Railroads (mph)



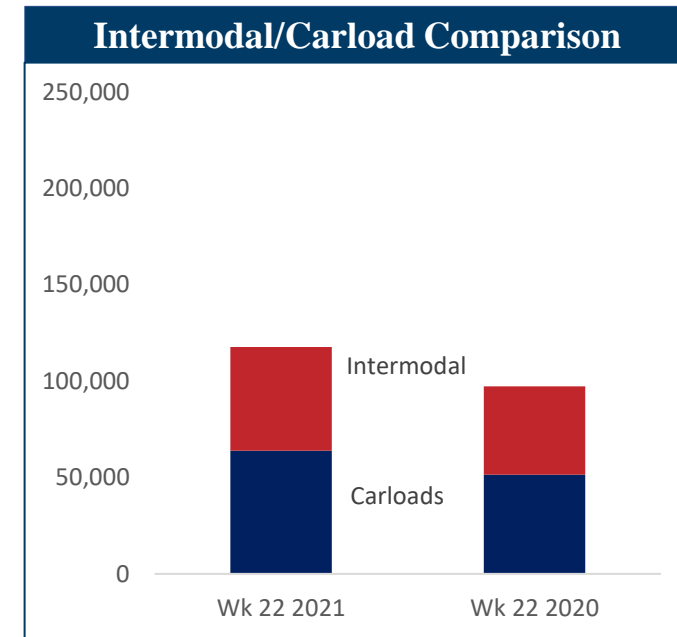
BNSF Weekly Carloads by Commodity				
Carloads	Week 22 2021	Week 22* 2020	Y/Y Nominal	Y/Y %
Chemicals	8,827	8,347	480	5.75%
Coal	29,835	25,392	4,443	17.50%
Coke	591	555	36	6.49%
Crushed Stone, Sand & Gravel	3,852	3,429	423	12.34%
Farm Products ex. Grain	442	592	(150)	-25.34%
Food & Kindred Products	2,477	3,097	(620)	-20.02%
Grain Mill Products	4,901	3,892	1,009	25.92%
Grain	9,791	11,170	(1,379)	-12.35%
Iron & Steel Scrap	703	527	176	33.40%
Lumber & Wood Products	1,683	1,607	76	4.73%
Metallic Ores	3,567	609	2,958	485.71%
Metals	1,997	1,382	615	44.50%
Motor Vehicles & Equipment	3,730	2,933	797	27.17%
Non Metallic Minerals	452	318	134	42.14%
Petroleum Products	5,621	5,243	378	7.21%
Primary Forest Products	49	61	(12)	-19.67%
Pulp & Paper	1,444	1,118	326	29.16%
Stone, Clay & Glass	2,436	2,356	80	3.40%
Waste & Scrap Materials	404	468	(64)	-13.68%
All Other	2,929	2,552	377	14.77%
Total	85,731	75,648	10,083	13.33%
Intermodal				
Containers	94,543	79,692	14,851	18.64%
Trailers	10,502	11,416	(914)	-8.01%
Total	105,045	91,108	13,937	15.30%
Total Traffic	190,776	166,756	24,020	14.40%



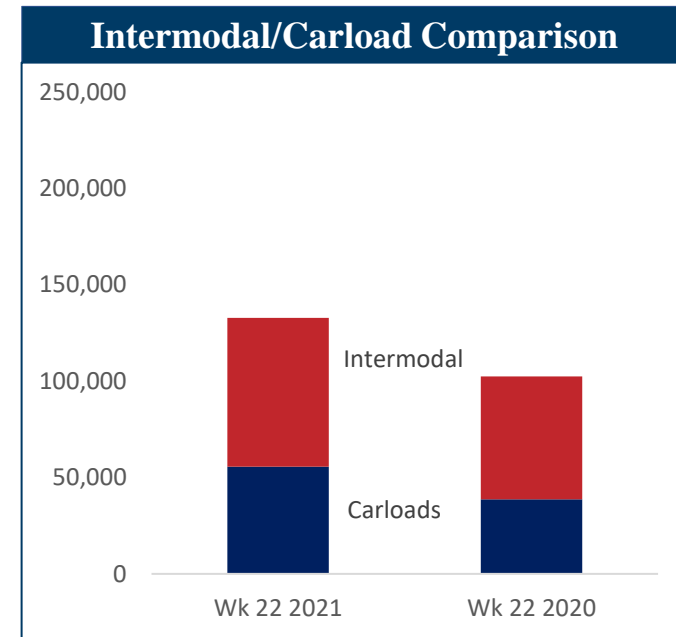
UP Weekly Carloads by Commodity				
Carloads	Week 22 2021	Week 22* 2020	Y/Y Nominal	Y/Y %
Chemicals	19,890	15,666	4,224	26.96%
Coal	15,180	12,538	2,642	21.07%
Coke	641	751	(110)	-14.65%
Crushed Stone, Sand & Gravel	6,100	6,038	62	1.03%
Farm Products ex. Grain	278	256	22	8.59%
Food & Kindred Products	4,055	3,659	396	10.82%
Grain Mill Products	3,256	2,648	608	22.96%
Grain	6,851	6,388	463	7.25%
Iron & Steel Scrap	683	567	116	20.46%
Lumber & Wood Products	2,457	1,809	648	35.82%
Metallic Ores	790	338	452	133.73%
Metals	2,532	1,919	613	31.94%
Motor Vehicles & Equipment	6,413	1,678	4,735	282.18%
Non Metallic Minerals	1,185	1,126	59	5.24%
Petroleum Products	4,298	3,196	1,102	34.48%
Primary Forest Products	228	227	1	0.44%
Pulp & Paper	2,000	1,424	576	40.45%
Stone, Clay & Glass	2,912	2,565	347	13.53%
Waste & Scrap Materials	525	567	(42)	-7.41%
All Other	3,576	3,932	(356)	-9.05%
Total	83,850	67,292	16,558	24.61%
Intermodal				
Containers	65,465	54,005	11,460	21.22%
Trailers	2,603	2,097	506	24.13%
Total	68,068	56,102	11,966	21.33%
Total Traffic	151,918	123,394	28,524	23.12%



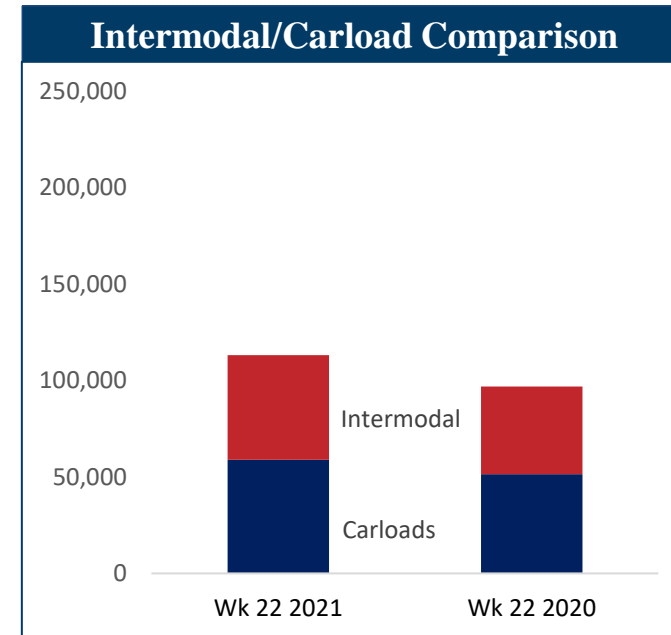
CSX Weekly Carloads by Commodity				
Carloads	Week 22 2021	Week 22* 2020	Y/Y Nominal	Y/Y %
Chemicals	10,760	8,390	2,370	28.25%
Coal	12,985	7,862	5,123	65.16%
Coke	870	613	257	41.92%
Crushed Stone, Sand & Gravel	4,578	4,773	(195)	-4.09%
Farm Products ex. Grain	170	157	13	8.28%
Food & Kindred Products	2,236	1,798	438	24.36%
Grain Mill Products	2,243	2,002	241	12.04%
Grain	2,901	2,712	189	6.97%
Iron & Steel Scrap	1,163	1,124	39	3.47%
Lumber & Wood Products	1,295	1,012	283	27.96%
Metallic Ores	674	659	15	2.28%
Metals	2,991	1,760	1,231	69.94%
Motor Vehicles & Equipment	5,951	4,110	1,841	44.79%
Non Metallic Minerals	2,902	2,554	348	13.63%
Petroleum Products	2,225	3,216	(991)	-30.81%
Primary Forest Products	537	568	(31)	-5.46%
Pulp & Paper	3,387	2,713	674	24.84%
Stone, Clay & Glass	2,594	2,176	418	19.21%
Waste & Scrap Materials	2,607	2,541	66	2.60%
All Other	843	739	104	14.07%
Total	63,912	51,479	12,433	24.15%
Intermodal				
Containers	51,769	43,678	8,091	18.52%
Trailers	2,027	2,134	(107)	-5.01%
Total	53,796	45,812	7,984	17.43%
Total Traffic	117,708	97,291	20,417	20.99%



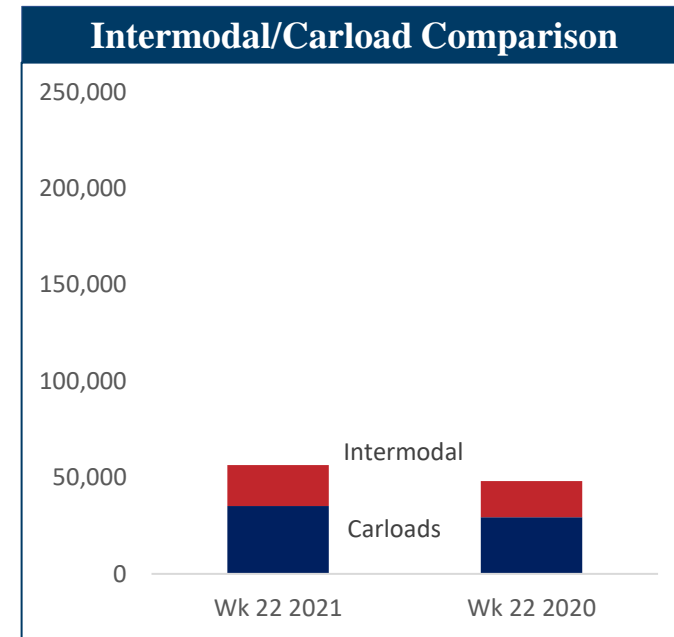
NS Weekly Carloads by Commodity				
Carloads	Week 22 2021	Week 22* 2020	Y/Y Nominal	Y/Y %
Chemicals	7,756	6,177	1,579	25.56%
Coal	11,645	6,461	5,184	80.24%
Coke	818	558	260	46.59%
Crushed Stone, Sand & Gravel	4,359	3,459	900	26.02%
Farm Products ex. Grain	160	152	8	5.26%
Food & Kindred Products	1,680	1,492	188	12.60%
Grain Mill Products	2,275	2,118	157	7.41%
Grain	3,277	2,577	700	27.16%
Iron & Steel Scrap	1,460	1,038	422	40.66%
Lumber & Wood Products	933	707	226	31.97%
Metallic Ores	87	58	29	50.00%
Metals	4,954	2,708	2,246	82.94%
Motor Vehicles & Equipment	5,732	2,833	2,899	102.33%
Non Metallic Minerals	471	406	65	16.01%
Petroleum Products	2,579	2,051	528	25.74%
Primary Forest Products	235	318	(83)	-26.10%
Pulp & Paper	2,484	2,143	341	15.91%
Stone, Clay & Glass	2,581	2,045	536	26.21%
Waste & Scrap Materials	1,119	913	206	22.56%
All Other	1,088	528	560	106.06%
Total	55,693	38,742	16,951	43.75%
Intermodal				
Containers	72,131	58,686	13,445	22.91%
Trailers	5,007	5,011	(4)	-0.08%
Total	77,138	63,697	13,441	21.10%
Total Traffic	132,831	102,439	30,392	29.67%



CN Weekly Carloads by Commodity				
Carloads	Week 22 2021	Week 22* 2020	Y/Y Nominal	Y/Y %
Chemicals	8,950	7,342	1,608	21.90%
Coal	7,136	4,796	2,340	48.79%
Coke	1,179	1,318	(139)	-10.55%
Crushed Stone, Sand & Gravel	2,583	1,527	1,056	69.16%
Farm Products ex. Grain	1,511	2,171	(660)	-30.40%
Food & Kindred Products	1,622	1,606	16	1.00%
Grain Mill Products	1,190	1,160	30	2.59%
Grain	3,790	4,669	(879)	-18.83%
Iron & Steel Scrap	449	421	28	6.65%
Lumber & Wood Products	2,854	2,287	567	24.79%
Metallic Ores	10,588	9,340	1,248	13.36%
Metals	1,815	1,263	552	43.71%
Motor Vehicles & Equipment	3,104	2,546	558	21.92%
Non Metallic Minerals	1,026	918	108	11.76%
Petroleum Products	4,901	3,825	1,076	28.13%
Primary Forest Products	1,141	1,013	128	12.64%
Pulp & Paper	2,850	2,626	224	8.53%
Stone, Clay & Glass	936	716	220	30.73%
Waste & Scrap Materials	356	135	221	163.70%
All Other	952	1,691	(739)	-43.70%
Total	58,933	51,370	7,563	14.72%
Intermodal				
Containers	54,317	45,553	8,764	19.24%
Trailers	-	-	-	-
Total	54,317	45,553	8,764	19.24%
Total Traffic	113,250	96,923	16,327	16.85%



CP Weekly Carloads by Commodity				
Carloads	Week 22 2021	Week 22* 2020	Y/Y Nominal	Y/Y %
Chemicals	6,933	6,567	366	5.57%
Coal	6,242	4,861	1,381	28.41%
Coke	8	11	(3)	-27.27%
Crushed Stone, Sand & Gravel	1,127	406	721	177.59%
Farm Products ex. Grain	1,408	2,048	(640)	-31.25%
Food & Kindred Products	1,494	1,385	109	7.87%
Grain Mill Products	496	726	(230)	-31.68%
Grain	5,644	4,994	650	13.02%
Iron & Steel Scrap	499	361	138	38.23%
Lumber & Wood Products	694	650	44	6.77%
Metallic Ores	108	303	(195)	-64.36%
Metals	828	547	281	51.37%
Motor Vehicles & Equipment	2,443	1,409	1,034	73.39%
Non Metallic Minerals	466	347	119	34.29%
Petroleum Products	3,874	2,190	1,684	76.89%
Primary Forest Products	13	40	(27)	-67.50%
Pulp & Paper	799	812	(13)	-1.60%
Stone, Clay & Glass	1,255	1,153	102	8.85%
Waste & Scrap Materials	159	161	(2)	-1.24%
All Other	700	445	255	57.30%
Total	35,190	29,416	5,774	19.63%
Intermodal				
Containers	21,209	18,834	2,375	12.61%
Trailers	-	-	-	-
Total	21,209	18,834	2,375	12.61%
Total Traffic	56,399	48,250	8,149	16.89%



KCS Weekly Carloads by Commodity				
Carloads	Week 22 2021	Week 22* 2020	Y/Y Nominal	Y/Y %
Chemicals	3,500	3,167	333	10.51%
Coal	3,443	2,196	1,247	56.79%
Coke	1,045	1,034	11	1.06%
Crushed Stone, Sand & Gravel	898	592	306	51.69%
Farm Products ex. Grain	71	44	27	61.36%
Food & Kindred Products	362	540	(178)	-32.96%
Grain Mill Products	810	839	(29)	-3.46%
Grain	2,734	2,230	504	22.60%
Iron & Steel Scrap	496	273	223	81.68%
Lumber & Wood Products	240	174	66	37.93%
Metallic Ores	146	126	20	15.87%
Metals	1,528	1,598	(70)	-4.38%
Motor Vehicles & Equipment	2,239	1,580	659	41.71%
Non Metallic Minerals	130	99	31	31.31%
Petroleum Products	4,981	2,748	2,233	81.26%
Primary Forest Products	2	26	(24)	-92.31%
Pulp & Paper	1,662	1,581	81	5.12%
Stone, Clay & Glass	847	1,031	(184)	-17.85%
Waste & Scrap Materials	201	194	7	3.61%
All Other	692	583	109	18.70%
Total	26,027	20,655	5,372	26.01%
Intermodal				
Containers	18,614	16,054	2,560	15.95%
Trailers	142	203	(61)	-30.05%
Total	18,756	16,257	2,499	15.37%
Total Traffic	44,783	36,912	7,871	21.32%

